



furniture lighting & decor

*new year,
new heights*

trends for 2019 + winter
market previews

JANUARY 2019

furniturelightingdecor.com

Atlanta

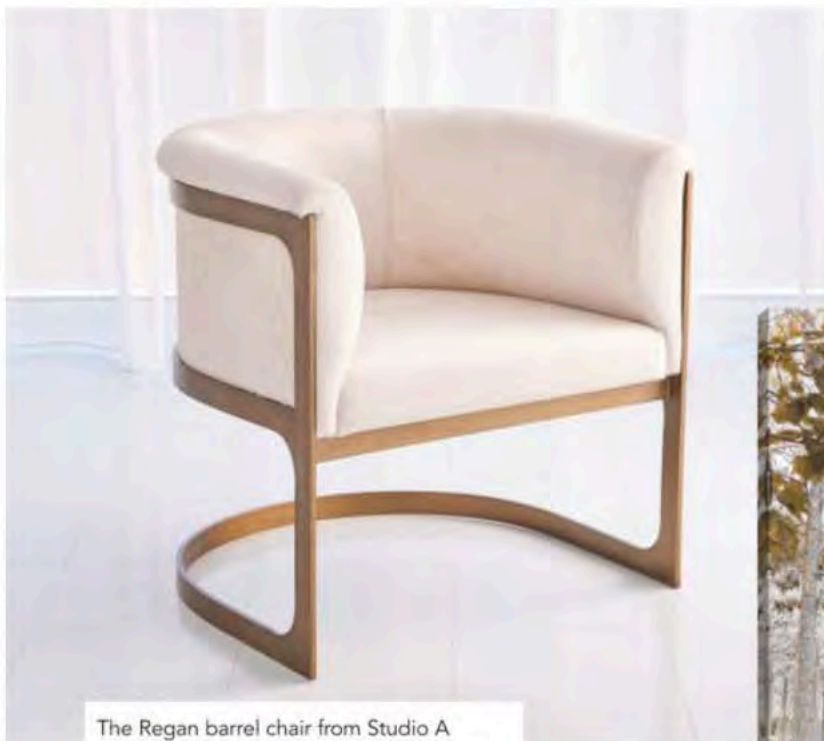
From artist Pamela Munger, the abstract Eternal piece for Surya blends cool and warm colors for a dynamic look. Printed on canvas and made in the U.S.. **Bldg. 1, 11-A1.** www.surya.com



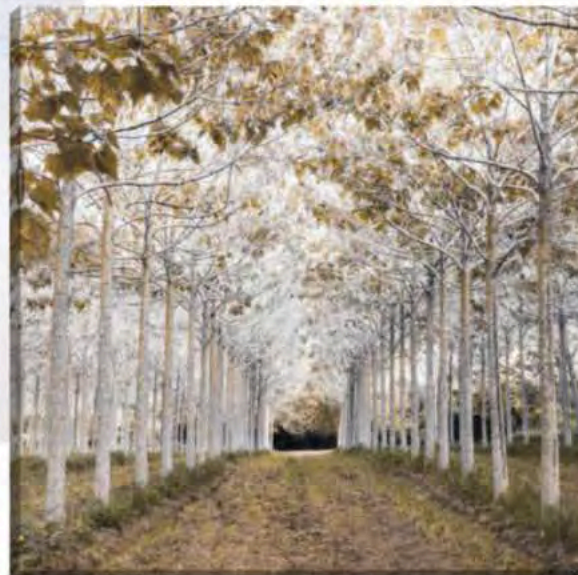
This energetic Corona framed canvas by Gayle Harismowich for Celadon Art combines the spirited spinning of white wash with just a tad of silver gild on a linen textured ground. **Bldg. 1, 10-C7.** www.celadonart.com



The Holmby bedside table from Mr. Brown London draws inspiration from the famed Los Angeles celebrity enclave, Holmby Hills. Stands on finished Aged Brass legs. **Bldg. 1, 9-B1.** www.mrbrownhome.com



The Regan barrel chair from Studio A Home offers an updated, Old-Hollywood look. Luxe hair-on-hide covers a seat and back wrapped in an Antique Brass-finished iron base. **Bldg. 1, 14-C1, C2** www.studioa-home.com



From Paragon, the 6673-White iclée on canvas piece transports the viewer to an understated fall landscape. Measures 48 inches square. **Bldg. 1, 12-A8.** www.paragonpg.com

HYGGE IMPACTS

The Danish term for a feeling of contentedness or coziness, hygge embraces simplicity, comforting textures and muted and neutral colors. When interpreted as a rug, it results in these designs that feel soft and look at home next to a crackling fire.

BY ALISON MARTIN



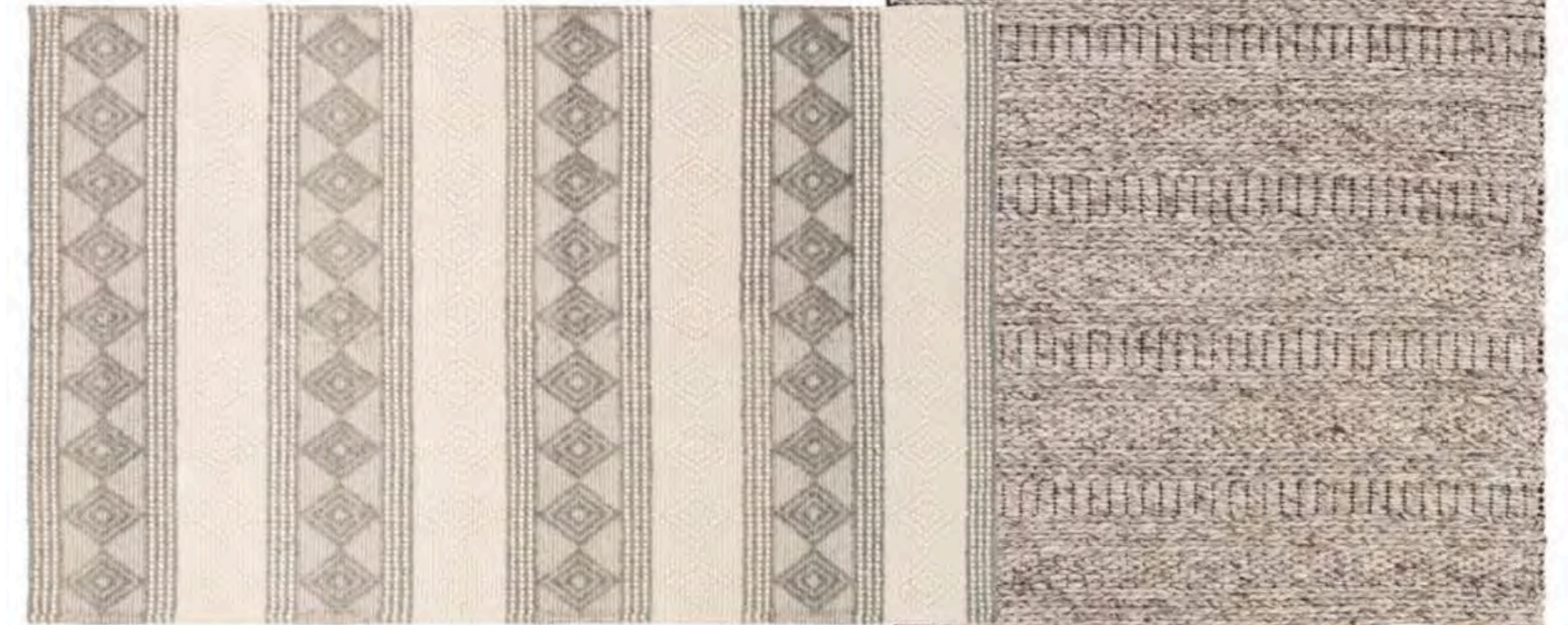
A Herringbone pattern works its way down this rug from KAS' Maui Collection. Tassels on the ends polish off the look. Hand-woven in India of wool with no back. Available in four sizes. www.kasrugs.com



Safavieh's Natura Collection exudes an artisan-crafted look and texture. Soft, lustrous yarns are blended to create contrasting textures, including over-sized loops and flat surfaces that are rich in dimension. An array of braided motifs, twills and boucle effects distinguishes this casual rug collection. www.safavieh.com



A subtle, diamond pattern woven into the wool and viscose blend adds dimensions to this soft, yet durable Madison Collection rug from Classic Home. www.classichome.com



Aptly named Hygge, this rug from Surya features a pattern of diamonds and stripes in white and Charcoal colors. It is hand-woven of wool with no pile. www.surya.com



The organic styling of the Berkeley Collection from Feizy is the perfect way to create a setting of casual comfort. Using a distinctive hand-woven technique, Berkeley's inherent designs are created by texture from 100 percent natural wool. Available in various earth tones. www.feizy.com



Wander is an inventive collection from Merida of six unique wool and sisal rugs designed and hand-finished by master craftsmen at the workshop in Fall River, MA. This design, Loft in Dove Ice Fog, takes texture to surprising places. Hand-cut wool floats on vertical bands in a harmonic pattern that hits all the right notes. www.meridastudio.com



The Mumbai Collection designed by Nikki Chu for Jaipur Living provides global and modern spaces with easy versatility and inviting texture. The Elixir area rug features a banded geometric design with a rich, high-low feel. A blend of viscose and wool lends this ivory rug an authentic yet soft hand. www.jaipurliving.com