

OCTOBER 2019

# hat

HOME ACCENTS TODAY®

*Trendspotting*  
GLOSS, CRAFT  
& THE FORCE

*Preview*  
HIGH POINT  
PRODUCT  
DEBUTS

STATELY  
STYLE

*High Design,  
then & now*

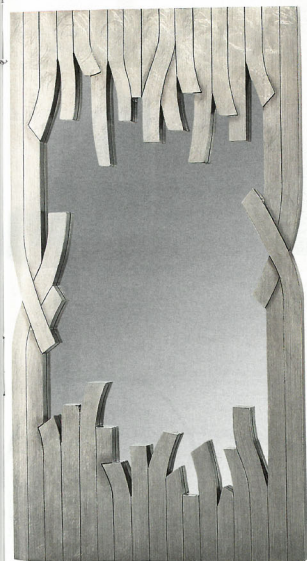


Zuo's Pure end table offers a white marble top resting upon a flaring golden base.



Crafted of terracotta with satin black wrought iron, Currey & Company's Tentecolo lamp casts a masculine silhouette beneath a black shade.

Lucknow, a new rug from Surya, is hand-knotted of viscose and wool with hints of charcoal, black, khaki and ivory.



Artmax's Branch mirror uses shading to create dramatic dimension.



Topanga mirrors from Eichholtz are made with small, triangular facets of reflective glass.

A frosted glass cylinder is the focal point of the Quilla LED floor lamp from Lite Source.







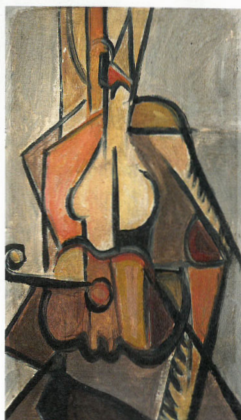
SONDER LIVING



SPECTRA HOME



STYLECRAFT  
HOME  
COLLECTION



SOUTH & ENGLISH



SPLASHWORKS



SURYA



SOUTHERN SKY HOME



STEIN WORLD



TARACEA



STUDIO A  
HOME



TEMPAPER