

hat

HOME ACCENTS TODAY

OCTOBER 2018

Master Class
SOCIAL TOOLS
FOR DESIGNERS

High Design
THE 'NEW' LUXURY

HIGH
CONTRAST

*Look for a mix of edge,
elegance at market*



HIGH POINT MARKET

SEMINARS AND EVENTS

FOR A COMPLETE LIST, VISIT HIGHPOINTMARKET.ORG

DAILY

9 a.m.-6 p.m. Steeple Designers Lounge. Includes Wi-Fi, beverages and snacks. Universal Furniture, 101 S. Hamilton St.

FRIDAY

Noon-1:30 p.m. Crypton Home CEU on Performance Fabrics. Presented by Sydney Vigot. 0.1 CEU. Universal Furniture, 101 S. Hamilton St.

2-5 p.m. Pattern Play the Southern Way. Featuring the textile designs of Denise McGaha, Michelle Nussbaumer and Kelly O'Neal. Design Legacy, 126 Virginia Place

3-4 p.m. Digital Marketing for Designers. Online brand builder FZK Franziska Neumann shows how designers should approach websites and digital marketing. Universal Furniture, 101 S. Hamilton St.

3-5 p.m. Thanking You for 30 Years. Currey & Company hosts a party to celebrate its 30th anniversary. Currey & Company, IHFC M110

5-7 p.m. Mark D. Sikes for Hudson Valley Lighting Launch Party. Hudson Valley Lighting, MS M70

5:30-8:30 p.m. Biltmore launch party. Fine Furniture Design and Biltmore launch their Quintessence Collection with on-site raffle, social media contest and more. 305 S. Hamilton St.

6 p.m. A Radiant Affair. Hors d'oeuvres, cocktails and surprises at Classy Art. Center Point on Hamilton 114

6-9 p.m. Mill Collective hosts opening reception. Launch of Plant Seven with the introduction of Material ConneXion. 410 W. English Ave.

6-7:30 p.m. WithIt President's Reception. Fairfield Chair Co., 200 N. Hamilton St. North Court 207

6-8 p.m. Arteriors Grand Opening. Live music, cocktails and canapés. C&D 1A

6-9 p.m. Whole Child International benefit dinner and silent auction. Featuring Charles, 9th Earl Spencer, and Countess Spencer. Cost is \$25. Theodore Alexander, 229 Russell Ave.

SATURDAY, OCT. 13

8-9 a.m. Open SFC Membership Meeting. Latest news and updates on Sustainable Furnishings Council initiatives. SP top floor

9-10:30 a.m. Creative Women & Their Vision. With Alley founder Mary Ella Gabler, interior designer Denise McGaha, and Addison Weeks co-founders Lee Addison Lesley and Katherine Weeks Mulford. Highland House, 200 Steele Floor 1

9-10:10:30 a.m. A Wallpaper Revolution. With Amy Mills and expert installer Katie Hunt. Antique & Design Center, MS G7031

10 a.m.-5 p.m. Meet Real Housewife of New York Jill Zarin, who is unveiling her new Manhattan Rug Collection. Unique Loom, MS Floor 2

10-11 a.m. Dominate the Digital. Dennis Sarlo and his Dering Hall team moderate a roundtable on web-based marketing techniques. The Point

11 a.m.-noon. Platform Building: The Power of Persuasion. With Corey Damen Jenkins, Cheryl Luckett and Jennifer Gracie, moderated by author Kim Kuhtaubl. Book signings to follow. SAMS T1014

11 a.m.-12:30 p.m. Wanderlust: Travel, Culture & Design. Panelists David Santiago, Kelli Ellis, Scott Meacham Wood and Michelle Nussbaumer. Gary Inman will moderate. Currey & Company, IHFC M110

11 a.m.-noon. Chaise Lounge Design Panel. Nick May of The Chaise Lounge Podcast hosts a panel discussion. Universal Furniture, 101 S. Hamilton St.

Noon-1 p.m. Design Viewpoints Series-The Interior Design Industry: The New Business as Usual. Discussion led by Julia Noran Johnston with

Justina Blakeney, Kerrie Kelly, Noa Santos and Kimberley Seldon. Boxed lunch provided. 0.1 CEU. High Point Theatre

12:30-1:30 p.m. Lunch Bunch with Susan Dickenson and Bill McLoughlin. Stop by The Point and enjoy lunch with the editors from the two High Point Market daily publications, Home Accents Today and Furniture Today. The Parson's Table Pop-Up will have homemade salads and sandwiches for sale. The Point

2-3 p.m. Showhouse in a Showroom Panel: Is a Niche Critical for Your Business? Showhouse in a Showroom designers Billy Ceglia, Jeanne Chung, Kara Cox, Cynthia Ferguson, Shay Geyer, Kimberly Perron and AphroChic, and Designers Today's Jane Dagmi. 0.1 CEU. Alden Parkes, 200 N. Hamilton

2-3 p.m. The Ins and Outs of Licensing. Roundtable discussion with licensing specialist Dwayne Clark and licensors Libby Langdon and Denise McGaha. The Point

2 p.m. Small Batch Gatherings, Big-Picture Strategies: Maximizing the Power of Community in Your Communications. With Amy Flurry. Mill Village Collective, 410 W. English Rd.

2-5 p.m. Design Tour and Meet & Greet with Anna Bond. Loloi and Rifle Paper Co. celebrate their new collaboration. Loloi, IHFC D320

2-4 p.m. Midtown Collection Launch and Book Signing. With Suzanne Kasler, Mariette Hines Gomez and Susan Hable. Hickory Chair, MS 314

3-4 p.m. Keynote Series: 20/20 Vision-Forecasting Color & Home Trends for 2019-2020 with Sherwin-Williams & Fashion Snoops. With Sue Wadden and Jaye Anna Mize. High Point Theatre

3-5 p.m. Ann Gish Showroom Opening. Party for the opening of Ann Gish's new Interhall showroom. IHFC IH114

3-5 p.m. - Madcap Cottage by Port 68 Launch Party. IHFC IH307
3:30-7:30 p.m. Phillips Collection Meatballs & Moonshine Industry Mixer. Phillips Collection hosts its annual opening night party. IHFC C202

3:30-4:30 p.m. Fearless Design. Holly Hollingsworth Phillips, U.S. brand ambassador for the Florence Broadhurst: Fearless Design campaign, with Mally Skok, Julia Buckingham, Jamie Meares, Allison Mattison, Tavia Forbes and Monet Masters. 0.1 CEU. SAMS T1014

4-6 p.m. Chairish Celebrates Vintage

Cool. Meet team Chairish and Stephanie Schofield, Gillian Bryce, Tandem Antiques, Trilogy Antiques, The Hudson Mercantile, Dinnerparty Antiques, Architectural Anarchy and Rod Coles. 314 W. Russell Ave.

4:15-5 p.m. Meet and Greet with HGTV's "Home Town" stars, Erin and Ben Napier. The Point

4:30-6 p.m. Fearless Design Meet & Greet Reception. Julia Buckingham will sign copies of her book "Modernique." SAMS T1014

5-7 p.m. Black Interior Designer Network Mixer. Drinks and hors d'oeuvres. The Point

5-7 p.m. Kim Salmela for Norwalk Furniture launch party. IHFC M108

6 p.m.-midnight. Zuo's James Bond-themed party. Performances, aerial and cirque style acrobats, live music, electronic DJs and a full bar. IHFC D502

7-9 p.m. Stars Under the Stars: Jocelyn & Chris Arndt. Center Stage at the Transportation Terminal

SUNDAY, OCT. 14

7:30-9 a.m. WithIt Education Breakfast with Erin and Ben Napier. IHFC Green Wing, 11th Floor Ballroom

8:30 a.m. Home Accents Today editorial breakfast. Sponsored by High Point Market Authority. By invitation. Spring & Splinter

10-11 a.m. Painted Design Solutions to Help Your Business. 0.1 CEU. SAMS T1014

10-11 a.m. Interior Planning: Taking Care of You So You Can Take Care of Your Clients. How to set boundaries and manage time with Kim Kuhtaubl. 0.1 CEU. Alden Parkes, 200 N. Hamilton

10-11:30 a.m. Aspire Design & Home's Budgeting for Art from the Start. Panelists Krista Nye Nicholas, Tami Ramsay, Sarah Walker, Heidi Woodman, Maryanne Hibner and Marshall Erb will share insights with Susan Jamieson of Bridget Bearl Designs. Zoe Bios Creative, 110 S. Elm St.

11 a.m.-2 p.m. Brunch with Windsor Smith. Smith celebrates the launch of her collection of lighting, accessories and furniture. C&D 1A

11 a.m.-noon. European Legacy, Global Legacy, Modern Sensibility. Gary Inman, Fabio Rizzolo, Gaetano de Cataldo, Hans Rolink and Germano Cavalli. Hosted by Conarte America. 827 W. Green Drive.

11 a.m.-1 p.m. Sunday Mimosas with Robin Baron. SAMS G6033

11:30 a.m.-12:30 p.m. Recipe for Success. How to make yourself attractive to editors. Barclay Butera, Amy Flurry, Nick May, Christine Phillips and Jane Dagmi. 0.1 CEU. SAMS T1014

Noon-1 p.m. Design Viewpoints Series-Tech Tools + Reviews from the Designers Who Use Them. Kelli Ellis, Phyllis Harbinger, Corey Damen Jenkins and Laura Thurman. Lunch provided. 0.1 CEU. High Point Theatre

Noon-3 p.m. Madcap Cottage by Momenti Celebration. Light fare, drinks and giveaways. IHFC H345

12:30-2 p.m. Lunch with Libby Langdon: "Courting the Small-Space Client: Design Tips for this Growing Demographic." Kas Rugs, IHFC G270

1-3 p.m. Cotton & Quill Southern Affair Preview. Mary Catherine Folmar previews new designs. SAMS M7038

1:30-2:30 p.m. Designing Women of the World. Deb Barrett moderates panel discussion with Adriana Hoyos, Tina Nicole, Torna Clark Haines, Sandra Espinet and Aviva Stanoff. 0.1 CEU. SAMS T1014

2-3 p.m. Replacements Ltd. Presents Eddie Ross, Mix Master. Learn how to collect, restore and incorporate vintage finds in modern spaces. 0.1 CEU. Alden Parkes, 200 N. Hamilton

2-3 p.m. Breaking Through the Roadblocks: Overcoming Difficulties of Running a Design Firm. Gail Doby offers actionable advice. The Point

2-3 p.m. Social Media Mavens Top Tips for Social Media Success. Adam Japko talks with designers Shayla Copas, Natalie Reddell and Lori Paranjape about social media trends. Universal Furniture, 101 S. Hamilton St.

2-4 p.m. Book Signing, Jeffrey Dungan, "The Nature of Home: Creating Timeless Houses." Currey & Company, IHFC M110

3-4:30 p.m. Keynote Series: The Future of Retail Via the Customer Experience. Doug Stephens discusses remarkable customer experiences and how retailers can deliver them. High Point Theatre

3-4 p.m. Luxury Comes Home: Global Design in a Modern World. Cynthia Spence and designers Patrick Sutton and Sandra Espinet talk resorts and hotels in the global landscape. Burton James, 310 N. Hamilton St.

3-5 p.m. Howard Elliott Cocktail Party. Showroom tours, cocktails and

artisan hors d'oeuvres by Southern Roots. Howard Elliott, IHFC H224

3-5 p.m. Debuting the Denise McGaha Collection for Currey & Company. McGaha showcases her new lighting and furniture. IHFC M110

3-5 p.m. Crypton Pooch Pop-Up. Snap a pic with these comfort dogs and post to social media with the hashtag #cryptonpoochpopup and Crypton will make a donation to Elite Canines Comfort Dogs. The Point

3-5 p.m. - Worlds Away party. Learn results of its 6th annual lifestyle photo contest. IHFC IH500

3:30-4:30 p.m. Luxe DIY Craft Hour with The Trim Queen. Jana Platina Phipps discusses the evolution of trimmings and shows attendees how to make several kinds. The Point

3:30-4:30 p.m. Inside the Designer's Studio with Madcap Cottage. Jason Oliver Nixon and John Loeckle discuss design topics. Moderated by Stacy Kunstel. First 30 attendees receive their book, "Prints Charming." SAMS T1014

4-6 p.m. Leftbank Art cocktail party with Jackie Von Tobel. IHFC H304

4 p.m. Tabletop Styling Cocktail Party. Designer Maria Adams in collaboration with Replacements, Ltd. Woodbridge Furniture, 320 N. Hamilton

4-6 p.m. Sangria with Carson & Thom. Carson Kressley and Thom Filicia celebrate their TV show "Get a Room." Eastern Accents. SAMS G1000

4:30-5:30 p.m. Meet & Greet Book Signing with Madcap Cottage's John Loeckle and Jason Oliver Nixon. Momenti, IHFC H345

5 p.m.-midnight. Home TV Celebrity Reunion and Fall Celebration. Hosted by Design Talk Live. Surya, SP 4100

5-7 p.m. Interior Design Society Membership Mixer. Complimentary drinks and hors d'oeuvres. The Point

5:30-10:30 p.m. American Home Furnishings Hall of Fame Induction Ceremony. Tickets at leadwithvision2018.com. Sheraton Greensboro at Four Seasons, 3121 W. Gate City Blvd.

7-9 p.m. Stars Under the Stars, featuring Sheila E. Center Stage at the Transportation Terminal

MONDAY, OCT 15

10-11 a.m. Performance Fabrics Playground. Stain-creating scenarios and discussion about the technologies used with members of the International Textiles Alliance. The Point

10-11 a.m. Sherwin-Williams Colormix Forecast 2019 CEU Course. Universal Furniture, 101 S. Hamilton St.
10-11 a.m. How to Set Client Expectations & Keep Them (And You) Happy. Gail Doby explains how to set boundaries and manage clients' expectations. 0.1 CEU. SAMS T1014

10:30 a.m.-noon. Designers Today's Business of Interior Design Rapid-Fire Info Session. Led by Editor in Chief Jane Dagmi. Surya, SP 4100

11 a.m.-12:30 p.m. How to Adapt to a Changing Industry. Moderated by Christopher Grubb with Andrea Guardiola, Thomas Wolosik, Patti Carpenter, Bill McLoughlin, John Erdos, Barrie Livingstone and Serena Martin. Zuo, IHFC G582

11:30 a.m.-12:30 p.m. Sherwin-Williams Colormix Forecast 2019. 0.1 CEU. SAMS T1014

11:30 a.m.-12:30 p.m. SFC's Wood Furniture Scorecard lunch and panel discussion. IHFC 11th Floor Green Wing Ballroom A

Noon-1 p.m. Design Viewpoints Series: Wellness in the Home: How to Sell Healthy Design. Sarah Walker of The Curated House with Jennifer Jones Condon, Blanche Garcia, Young Huh, Lisa Kahn and Richard Ouellette. Lunch provided. 0.1 CEU. High Point Theatre

1-2 p.m. Retailer & Designer: Relationship 101. This entertaining panel of retail and design pros talk real-life challenges — learning to work together, what it takes to build great professional relationships and how to grow business for both parties. Join audience moderator, Commander in Chic Natalie Reddell, and panel moderator Susan Dickenson, editor in chief of Home Accents Today, for an interactive discussion with Courtney and Teddie Garigan, of Coco & Dash and Cio, Cocol, Claire Bell, of Claire Bell Home and Jamie Merida of Bountiful. Co-sponsored by Home Accents Today and IMC-DesignOn-HPMkt. SAMS T1014

2-3:30 p.m. Maison et Objet Trend Report. Kelli Ellis and Patti Carpenter discuss trends and findings from the show. Sunpan Modern Home, SP 1200

2:30-3:30 p.m. Art Styling 101: Working with Collections and Focal Pieces. Designer tips and art selection steps followed by a Q&A segment. 0.1 CEU. SAMS T1014

3-4 p.m. Keynote Series: Materials Matter! The Resurgence of the Physical in Our Increasingly Digital Lives.

Andrew Dent, executive vice president of research and chief material scientist for Material ConneXion, examines the role materials play in the home. High Point Theatre

3-5 p.m. State of Home Design Today & Trends to Watch. Jewel Branding's Ilana Wilensky and Meredith Counts share trends while Hang Ten's Michael Wertheim shows new rugs. Kas Rugs, IHFC G270

4-7 p.m. Third Night. Events in various showrooms in the Hamilton-Wrenn Design District.

4-6 p.m. Lexington Design Center Grand Opening Celebration. Cocktails and canapés with special guest Barclay Butera. 1300 National Highway, Thomasville

4-6 p.m. Norwalk & Fashion Snoops: From Culture to Product, with Jaye Anna Mize and Norwalk designer Kim Salmela. Norwalk, IHFC M108

5-7 p.m. Design Influencers Conference Mixer. A reunion with founder Adam Japko. The Point

7 p.m. ART Bowling Night. Cost is \$30 per person for bowling, food and drinks. High Point Bowling Center, 309 W. Fairfield Rd.

TUESDAY, OCT. 16

9-10:15 a.m. Style Spotters Live. The 2018 Style Spotters offer insight and on-trend products, and the 2019 team will be revealed, followed by tours. IHFC Ballroom, Green Wing 11th Floor.

9:30-10:30 a.m. 360-Degree Design Perspective - How Showroom, Retail & Residential Design Drive Innovation for One Another. Led by Barbour Spangle Design's Christi Barbour. 0.1 CEU. SAMS T1014

10-11 a.m. Becoming an Influencer. Roundtable discussion with Paloma Contreras, Donna Garlough and Adam Japko. The Point

10:30-11:30 a.m. The Guide to Area Rugs CEU. Surya's CEU course on area rugs' history. Surya, SP 4100

11-11:30 a.m. Visually Communicating Your Brand. With Dena Verdesca. SAMS Top Floor

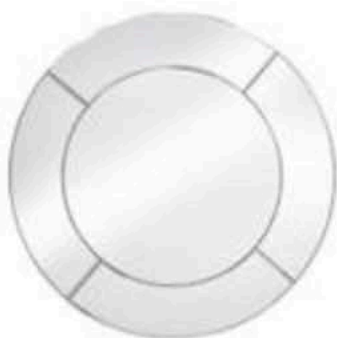
11:15 a.m.-12:15 p.m. Lunch Bunch & Book Signing with Paloma Contreras, Donna Garlough and Nora Murphy. The Point

2-3 p.m. What Now? Maximizing Your Market Momentum. With strategist Ellen Geffen, designer Lisa Mende and retailer Sarah Paxton. The Point

MIRROR, MIRROR

MIRRORS INSPIRE, ELEVATE
AND REFLECT WITH DRAMA,
DAZZLE AND BEAUTY.

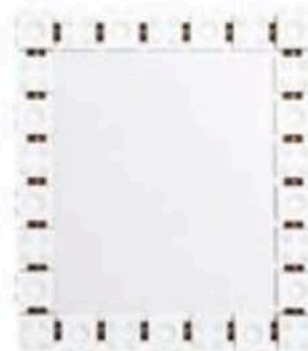
BY LAUREN BURKHEAD



Bassett Mirror



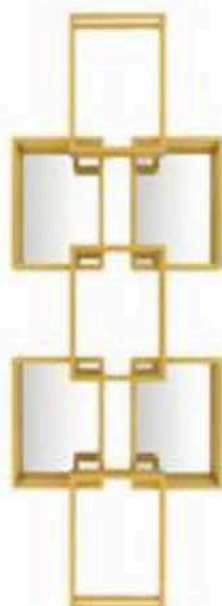
Three Hands



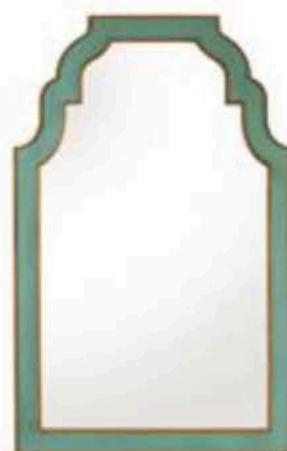
Mr. Brown



Phillips Collection



Surya



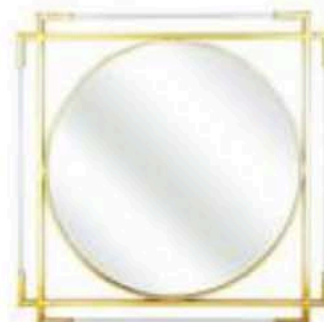
Bradshaw for Chelsea House



John-Richard



Howard Elliott Collection



Imax Worldwide Home

Product Spotlight: High Design



Cappadocia Rug

CPP-5023

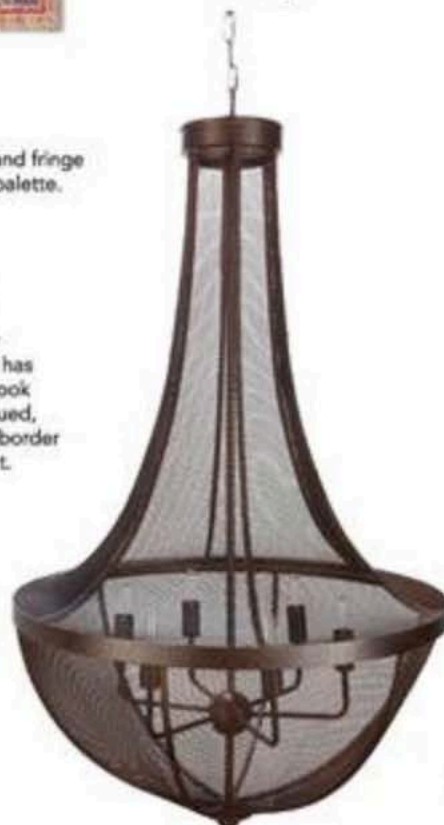
Surya's new Cappadocia rug is hand-knotted with 100% wool and fringe detail in a top-selling design and an updated traditional color palette.



Sadler Mirror

SAE-002

The new Sadler mirror by Surya has a vintage luxe look due to its antiqued, beveled mirror border and gold accent.



Lombard Ceiling Light

LOM-001

The antiqued mesh metal canopy of Surya's Lombard ceiling light has a traditional shape with an industrial edge.



Rigsby Bench

RIG-002

Add a touch of glamour with Surya's soft, bright blue Rigsby bench and its high-shine, brass base.



Gaza Pillow

GZA-002

Surya's new Gaza pillow is made with a blend of wool and cotton with multiple layers of fringe.



SURYA

877.275.7847

www.surya.com

High Point: Showplace 4100

EDGY ELEGANCE

HIGH DESIGN ENTERS THE COMFORT ZONE, ACCENTING WITH AUTHENTICITY, LUMINOSITY AND SPIRITED STYLE.

BY LAUREN BURKHEAD



LIGHTEN UP

Hudson Valley Lighting's Chambers chandelier blends clean contemporary lines with high-tech functionality in aged brass, bronze or polished nickel. (\$1,500)



ORGANIC LUXURY

The Strata lounge chair by Arteriors is a handsome study in organics, with thick loops of cut rattan wrapping a muslin-cushioned, curved rattan frame. (\$2,700)

BETWEEN THE LINES

Fine lines and subtle shades in charcoal, beige and gray characterize Surya's Bahar rug, a modern interpretation of tribal design.



BLUSHING BLOOMS

Diane James Home's bountiful bouquet of King Protea blossoms is artfully arranged in a gold ombre vase. (\$625)



CANDY COATING

This original painting from Linda Donohue Fine Art is inspired by the colors of Sugar Pine Point in Lake Tahoe, Calif. (\$3,800)

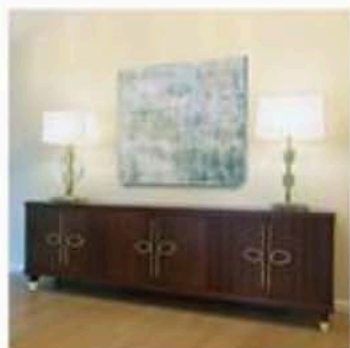


SUR LA CHAISE

The Ladder club chair designed by Angela Harris for Phillips Collection is constructed from suar wood and finished with white leather upholstery and brass.



ROBERTA SCHILLING



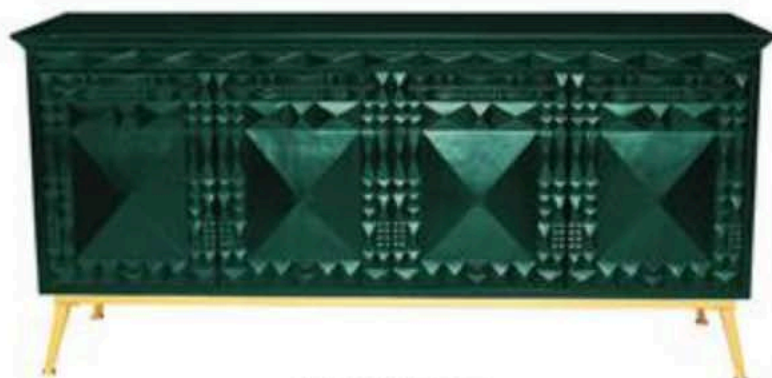
ROBIN BARON COLLECTION



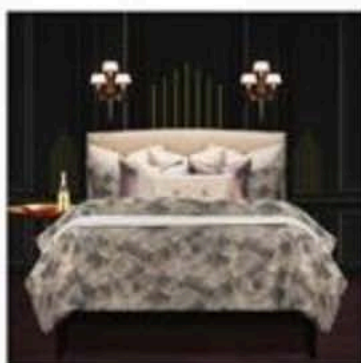
SAFAVIEH



SAGEBROOK HOME



SELAMAT DESIGNS



SISCOVERS



STEIN WORLD



STUDIO 67



STYLECRAFT



SURYA



TAYLOR KING

EDITORIAL SOURCES



1429 MFG
1429mfg.com

A.R.T. FURNITURE
arthomefurnishings.com

ABBYSON
abbyson.com

ADESSO
adessohome.com

ADRIANA HOYOS
adrianahoyos.com

AFD
AFDHome.com

AIDAN GRAY
aidangrayhome.com

ALDEN PARKES
aldenparkes.com

ALLSTATE FLORAL
allstatefloral.com

AMERICAN COVER DESIGN
amcover.com

AMERICAN HERITAGE
TEXTILE
donnasharp.com

AMITY HOME
amityhome.com

ART OF HOME
BY ANN GISH
anngish.com

ARTERIOS
arterioshome.com

ARTMAX
artmaxfurniture.com

AUSKIN
fbrebyauskin.com

AVASA
avasa.com

AVIVA STANOFF DESIGN
avivastanoff.com

BASSET MIRROR
bassetmirror.com

BDI FURNITURE
bdiusa.com

BEDFORD COTTAGE
bedfordcottage.com

BELLINI MODERN LIVING
bellinimodernliving.com

BETHEL INTERNATIONAL
bethelintl.com

BROYHILL FURNITURE
broyhillfurniture.com

CAPEL RUGS
capelrugs.com

CAPITAL LIGHTING
FIXTURE COMPANY
capitalightingfixture.com

CASTELLE
castelleluxury.com

CELADON ART
celadonart.com

CHELSEA HOUSE
chelseahouseinc.com

CHRISTOPHER GUY
christopherguy.com

CLAN MILANO
clanmilano.house

CLASSIC HOME
classichome.com

CLASSY ART
classyart.net

COASTER COMPANY OF
AMERICA
coastercompany.com

COMPANY C
companyc.com

CONARTE AMERICA
conarteamerica.com

COPELAND
copelandfurniture.com

COTTON & QUILL
cottonquill.com

COUNCILL
council.com

CREATIVE TOUCH
creativetouchrugs.com

CRESTVIEW COLLECTION
crestviewcollection.com

CURREY & COMPANY
curreyandcompany.com

DEBAGE
debage.com

DIANE JAMES HOME
dianejameshome.com

DOREL HOME
dorelhome.com

DOUG FRATES GLASS
doughfratesglass.com

DOWNTOWN COMPANY
downtowncompany.com

DURHAM FURNITURE
durhamfurniture.com

DYNAMIC RUGS
dynamicrugs.com

EASTERN ACCENTS
easternaccents.com

ELAINE SMITH
elainesmith.com

ELK
elkgroupinternational.com

ESSENTIALS FOR LIVING
essentialsforliving.com

F.J. KASHANIAN
fkashanian.com

FEIZY
feizy.com

FERMOB USA
fermobusa.com

FIBREWORKS
fibreworks.com

FLOW DÉCOR
flowdecor.com

FOUR HANDS
fourhands.com

FRAMBURG
framburg.com

FURNITURE CLASSICS
furnitureclassics.com

GENERATION LIGHTING
generationlighting.com

GLOBAL VIEWS
globalviews.com

GREENINGTON FINE
BAMBOO FURNITURE
greenington.com

GUILDMASTER
guildmaster.com

GUS MODERN
gusmodern.com

HANCOCK & MOORE
hancockandmoore.com

HARP & FINIAL
harpandfinial.com

HC28
HC28furniture.com

HOME ACCENTS
homeaccentsgallery.com

HOWARD ELLIOTT
COLLECTION
howardelliott.com

HUDSON VALLEY LIGHTING
hudsonvalleylighting.com

HURTADO
hurtado.eu/en/

IMAX WORLDWIDE HOME
imaxcorp.com

INTERLUDE HOME
interludehome.com

J ALEXANDER LIGHTING
jalexanderhome.com

JAIPUR LIVING
jaipurliving.com

JAMIE YOUNG
jamieyoung.com

JAUNTY
jauntyinc.com

JESSICA CHARLES
jessicacharles.com

JILL SEALE DESIGN STUDIO
jillseale.com

JKM HOME
jkmhome.com

JOFRAN
jofran.com

JOHN-RICHARD
johnrichard.com

JONATHAN CHARLES
jonathancharles.com

JULIAN CHICHESTER
julianchichester.com

KAMIYA FURNITURE
kamiyafurniture.com

KARASTAN
karastan.com

KAS RUGS
kasrugs.com

KENIAN
kenian.com

KENROY HOME
kenroyhome.com

KINDEL FURNITURE
kindelfurniture.com

KINWAI USA
kinwaiusa.com

LILI ALESSANDRA
lilialestancia.com

LINDA DONOHUE FINE ART
lpedart.com

LITE SOURCE
lite-source.net

LOLOI
loloirugs.com

LUMISOURCE LLC
lumisource.com

MAINLY BASKETS
mainlybaskets.com

MARIA YEE
mariayee.com

MELROSE INTERNATIONAL
melroseintl.com

MERCANA
mercana.com

MEVA
meva.us

MODSHOP
modshop1.com

MOES HOME COLLECTION
moeshomecollection.com

MOMENI
momeni.com

MR. BROWN LONDON
mrbrownhome.com

MUNIZ
munizplastics.com

NAPA HOME & GARDEN
napahomeandgarden.com

NATHAN ANTHONY
nathananthony.com

NEST HOME COLLECTIONS
nesthomelife.com

NOIR
noirfurniture.com

NOTRE MONDE
notremonde.com

NOURISON
nourison.com

OLD WORLD DESIGN
owdallas.com

OLIVER GAL ARTIST CO.
olivergal.com

OPERA CONTEMPORARY
operacontemporary.com

ORCHIDS LUX HOME
orchidsluxhome.com

ORIAN RUGS
orianrugs.com

PACIFIC COAST LIGHTING
pacificcoastlighting.com

PALLISER
palliser.com

PARAGON
paragonpg.com

PHILLIPS COLLECTION
phillipscollection.com

PIANCA
pianca.com

POETIC PILLOW
poeticpillow.com

PORTER DESIGNS
porterdesignusa.com

PRIMA DESIGN SOURCE
primadesignsource.com

RED HORSE SIGNS
redhorsesigns.com

REGINA ANDREW DESIGN
reginaandrew.com

RENWIL
renwil.com

RESOURCE DÉCOR
resourcedecor.com

RFA DÉCOR
rfadecor.com

RIZZY HOME
rizzyhome.com

ROBERT JAMES COLLECTION
robertjamescollection.com

ROBERTA SCHILLING
COLLECTION
rsollection.com

ROBIN BARON COLLECTION
robinbarondesign.com

SAFAVIEH
safavieh.com

SAGEBROOK HOME
sagebrookhome.com

SELAMAT DESIGNS
selamatdesigns.com

SISCOVERS
siscovers.com

STEIN WORLD
steinworld.com

STUDIO 67
studio67mats.com

STYLECRAFT
stylecraftonline.com

SURYA
surya.com

TAYLOR KING
taylorking.com

TEMPAPER
tempaperdesigns.com

TEXTILE WEAVERS
textileweavers.com

THREE HANDS
threehands.com

TOV FURNITURE
tovfurniture.com

TRADE WINDS FURNITURE
tradewindsfurniture.com

TROY LIGHTING
troylighting.hvlgroup.com

TWIN STAR HOME
twinstarhome.com

URBIA
urbiaimports.com

VARALUZ
varaluz.com

WILDWOOD
wildwoodlamps.com

WORLDWIDE HOME
FURNISHINGS
worldwidehomefurnishings.com

YORK WALL COVERINGS
yorkwall.com

ZOE BIOS CREATIVE
zoebioscreative.com

ZUO
zuomod.com

LEGAL NOTICE STATEMENT OF OWNERSHIP, MANAGEMENT AND CIRCULATION

(Act of August 12, 1970; Section 3685 title 39 U.S. code)

- Title of publication: Home Accents Today
- Publication number: USPS 015-132
- Date of filing: September 28, 2018
- Frequency of issue: Monthly
- No. of issues printed annually: 12
- Annual subscription rates: \$68.97, Can. & Mex. \$130.97, Other Int'l \$283.97
- Known office of publication address: Progressive Business Media, 7025 Albert Pick Rd., Suite 200, Greensboro, N.C. 27409. Contact: Greg Schafflein 336-605-1085
- Headquarters of general business office address: Progressive Business Media, 7025 Albert Pick Rd., Suite 200, Greensboro, N.C. 27409
- Publisher: Robin Martinez; Editor in Chief: Susan Dickenson; Managing Editor: Jennifer Burton, all of 7025 Albert Pick Rd., Suite 200, Greensboro, N.C. 27409
- Owner: Progressive Business Media, 7025 Albert Pick Rd., Suite 200, Greensboro, N.C. 27409

11. Known bondholders, mortgagees and other security holders owning or holding 1 percent or more of total amount of bonds, mortgages or other securities: None

12. Tax status: Not applicable

13. Publication title: Home Accents Today

14. Issue date for circulation data below: September 2018

15. Extent and nature of circulation

	Last 12 months avg. copies each issue	Single issue nearest to filing date
A. Total number of copies	20,865	18,014

B. Paid circulation/request circulation:

1. Mail subscriptions, outside-county	17,915	16,936
2. Mail subscriptions, inside-county	0	0
3. Street vendors, counter sales	60	55
4. Other classes through USPS	0	0

C. Total paid and/or requested

	17,975	16,991
--	--------	--------

D. Nonrequested distribution

1. Outside County stated on PS form 3541	4	0
1. In-County stated on PS form 3541	0	0
2. Distributed through USPS by other classes of mail	0	0
3. Distributed outside the mail	2,886	1,023

E. Total nonrequested distribution

	2,890	1,023
--	-------	-------

F. Total distribution

	20,864	18,014
--	--------	--------

G. Copies not distributed

	0	0
--	---	---

H. Total

	20,864	18,014
--	--------	--------

I. Percent paid and/or requested circulation

	86.15%	94.32%
--	--------	--------

16. Electronic copy circulation

A. Requested and paid electronic copies

	697	753
--	-----	-----

B. Total requested and paid print copies + requested/paid electronic copies

	18,672	17,744
--	--------	--------

C. Total requested copy distribution + requested/paid electronic copies

	21,561	18,767
--	--------	--------

D. Percent paid and/or requested circulation

	87%	95%
--	-----	-----

This statement of ownership will be printed in the October 2018 issue of this publication.

I certify that the statements made by me above are correct and complete.

Robin Martinez